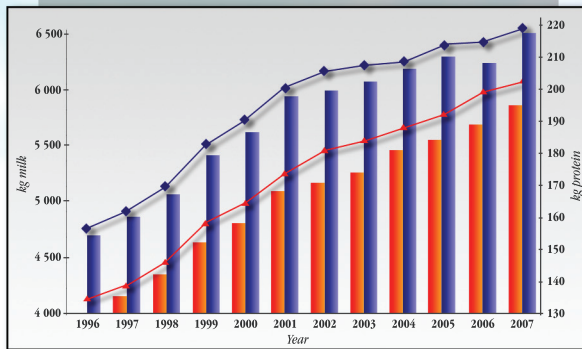
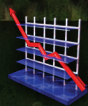


- Germany
- France MON
- Austria
- Czech Republic
- Croatia
- Italy
- Slovakia
- Switzerland FV
- Slovenia
- Romania
- France SIM
- Switzerland SIM
- Serbia
- Hungary
- Poland

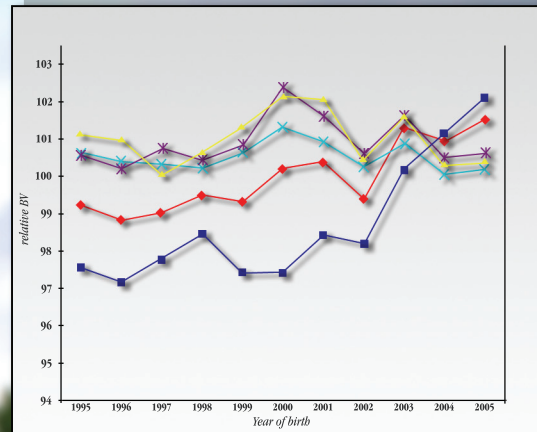
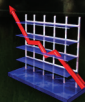
**Number**  
of young bulls yearly tested



- 1st lactation - kg protein
- 2nd and other lactation - kg protein
- 1st lactation - kg milk
- 2nd and other lactation - kg milk

*Excellent milk production*  
*Very good beef production & beef quality*  
*Fertility & calving ease*

**Breeding**  
values development  
(milk and protein) of the bulls – TDM



- FW - meat index
- FA - beef percentage
- NZ - daily gain
- AUS - dressing percentage
- HKL - EUROP grade

*Vitality & health*  
*High feed intake & feed conversion*  
*High growth rate*  
*Adaptability*

**Breeding**  
values development  
(meat) of the Czech bulls

